



SPLASHOUT III

Why do we need help now?

Our pool has just had its 30-year anniversary. The pool was built originally following fundraising from the local community and has been well used during its 30-year history by the whole community. The pool receives no direct funding support and despite careful and regular maintenance it now requires the replacement of major equipment.

PROJECT REPORT

The Swimming Pool at Knights Templar Community Church School in Watchet is an essential first learning pool in the second town of West Somerset which provides learning experiences as defined by Government and exercise for all the community. It has importance as there is no prospect of a 25 metre pool in West Somerset.

Our pool now offers the only opportunity for our school and surrounding area to meet the Government mandatory standards which requires every child to be able to swim 25 metres.

Use of the pool is also in line with a number of other Government initiatives and guidance notes relating to Sport, Healthy Living, Disability, Mental Health, Fitness and Wellbeing. The warm and inviting pool is available to all members of our Community.

Many children taught to swim here have gone on to work as teachers, into the leisure and recreation industry and to swim at County and National level.

Two former swimmers, taught for many years in this pool, are currently competing in National Level events. Not bad for a small grass roots pool?



Pool: 12½ x 5 metres; 0.85-1.3metre deep

Our School is a Church school for 190 pupils (5 to 9 years) in a deprived rural and seaside area that is bottom (324th out of 324) of the Social Mobility index and 2nd worst in the Early Years Social Mobility Indicators in England.

The permanent 12½ metre pool was built to a high specification in 1993; extended and improved in 2008 and received a new changing room, roof and external cladding in 2012.

The pool has now served the community for 30 years and is a valuable resource in a deprived rural area; currently insured for £1.2million.



Naturally many equipment repairs have been needed over the years and hitherto these costs have been met without call on any outside funding.

A fund-raising Committee was formed in November 2023 with the task of replacing worn-out equipment and to investigate the possible addition of solar panels on the large south-facing roof.

To give some idea of costs, we need £45,000 to replace several major items of equipment that have given good service for many years. A new heat exchanger unit will be more efficient and save on gas and electricity.

Applications are being made to a number of local sources and we seek further help to enable us to continue swimming in the future.

OUR COMMITMENT

Ours is a thriving school in the rural, deprived, coastal area of West Somerset. Income for the pool has been from School use, lettings to other local schools, two swimming clubs and is inclusive of community groups. The pool is not subsidised and has hitherto covered its costs.

The pool has been regularly and carefully maintained since 1993 and many items of equipment have been replaced, changing rooms extended and a large heated changing room and a meeting room have been added.

THE PROJECT

The pool has been in use for up to 9 hours a day for 7 days a week for 30 years. It was affected by the 2 national COVID lockdowns when it could not be opened and therefore could not generate any income. The pool has been further impacted by the ever-rising costs of energy.

We now need further investment to ensure the pool continues as a vital community asset that benefits schools, the young and the elderly and all ages in between. A 30-year refresh is needed.



Despite regular Maintenance there is concern over the condition of some of the equipment. The building is triple insulated to 2012 standards and remains in good condition, though some minor maintenance work is indicated. The picture shows the shower area, which needs some repair - and also see the addendum below.

Estimates for Capital assistance come to a total of £45,000. This will be extremely hard to raise from a small rural school in a deprived coastal area and we ask for your help so our children can continue to learn this basic, potentially life-saving skill and provide exercise for the wider community.

EVIDENCE of USE by COMMUNITY

Actual Pool Usage – April 2023-October 2023

218 Pool Memberships

500 Individual and repeat bookings

2 Swim Schools – Otters Swim School, Watchet Dolphins

1 Fitness Class

9 Mid-week Adult Groups – Regular Bookings

Hundreds of Family Bookings

Old Cleeve School and Danesfield School Swimming Lessons

Foxes Special Needs Education

INDICATION of COSTS

A first indication of costs is as follows:

Replacement pool circulation pump	£ 2,100
Replacement heat exchanger unit	£ 25,000
Replacement fresh air fan	£ 1,230
Replace ventilation fresh air ducting	£ 790
Replace hot water circulation pump.....	£ 660
Replace UV light disinfection equipment.....	£ 2,000
Humidity; water; air digital installer	£ 910
RegROUT whole pool and replace missing tiles.....	£ 3,500
RegROUT the pool surrounds	£ 2,000
Change sand in filter	£ 1,810
Improve Shower area.....	£ 2,000
Preserve exposed wood by ImprA-Elan	£ 2,500
Erect small porch to protect main entry door.....	£ 500
Total:.....	£ 45,000

WHO ARE WE ?

We are members of the School Staff; Governors; the School Community Association; we are all regular Pool Users

Jenny Thomas is our Chair and is vice-Chair of Governors

Laura Weaver is our school acting Head Teacher

Linda Bulpin is our Chair of Governors

Cllr Sean Terrett is a Town Councillor

Gemma Parsons is Chair of the School Community Association

Jenny Knowles is the School Business Manager

Ray Tew has been involved with the pool since inception

Jim Butterworth is our Secretary and a Swim England Swimming Teacher



We ask your organisation to help us maintain and improve this essential and successful facility

THANK YOU

Jim Butterworth

December 2023

It's a great pool - but let us show you some of the warts:



We continue to invest in our pool with a new state-of-the-art Chlorinator and recent Water Pump



General deterioration of back wall and components in plant room



One (of four) main building supports



Calorex heat exchanger no longer able to maintain set temperature



Tile off or damaged (typical)



The limited area of original exposed wood badly needs recoating with Imprax-Elan



Simple canopy needed to deflect rain away from meeting room door



Simple canopy needed to deflect rain away from entrance door



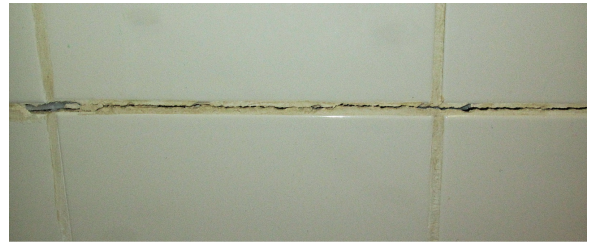
Black rot at bottom of many uprights needs treatment



Some tiles require repair/replacement



Leak or condensation needs treating



Some tiles need regrouting



Changing-room doors are sagging



Seating could be improved



Condensation or Roof Leaking?



Extractor fan not working



Corrosion on air pipe and supports



Corrosion on sink supports



Tiles broken and pipe corrosion



**Black rot at bottom of many
uprights needs treatment**



**Black rot at bottom of many
uprights needs treatment**



**Deterioration of Bottom of Shower Cubicle
Shower push-buttons also need renewal**